



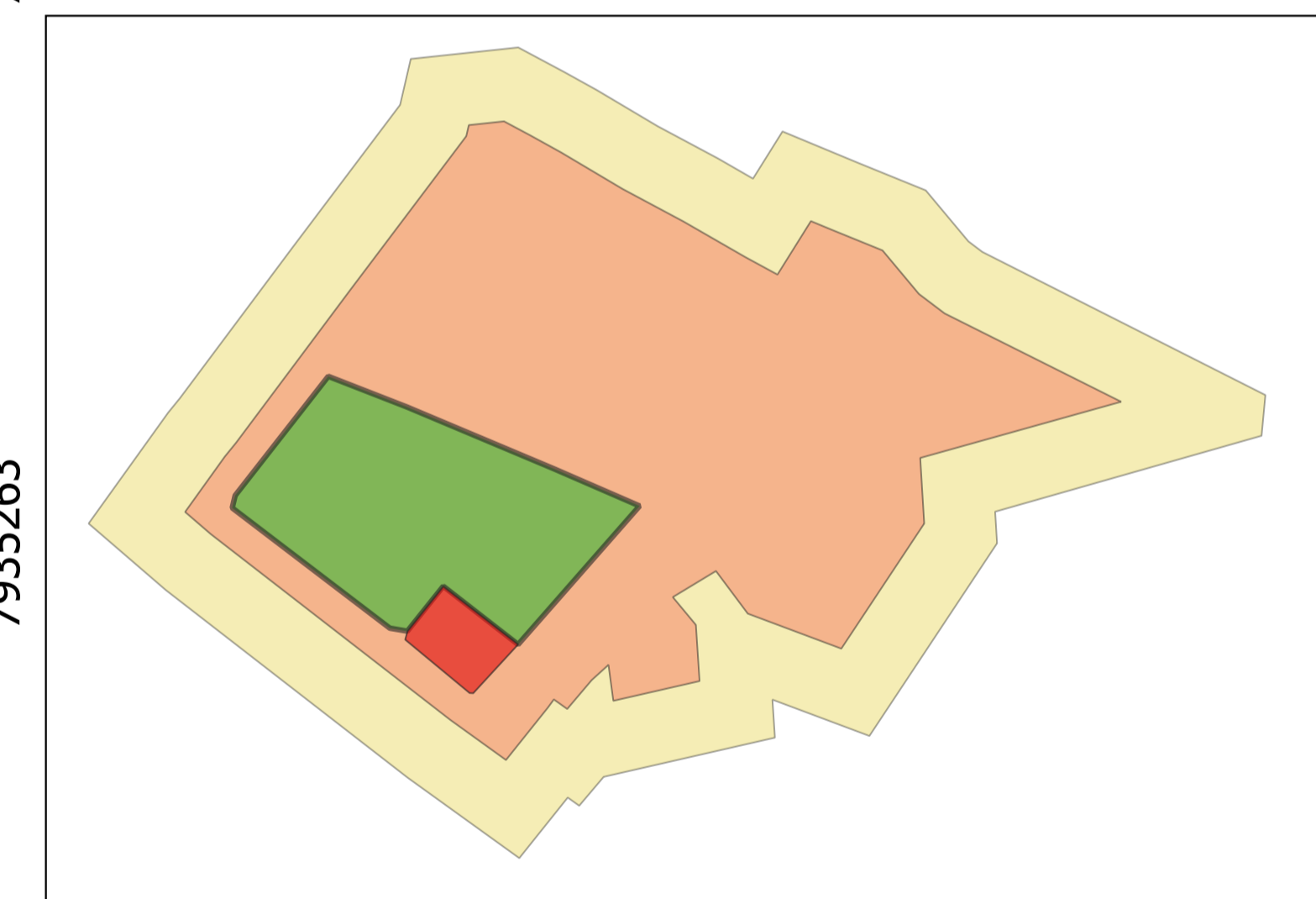


# Zoneamento Entorno da UC

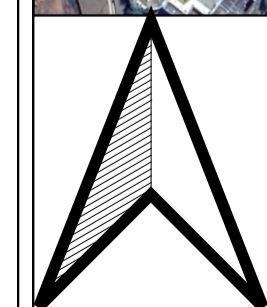
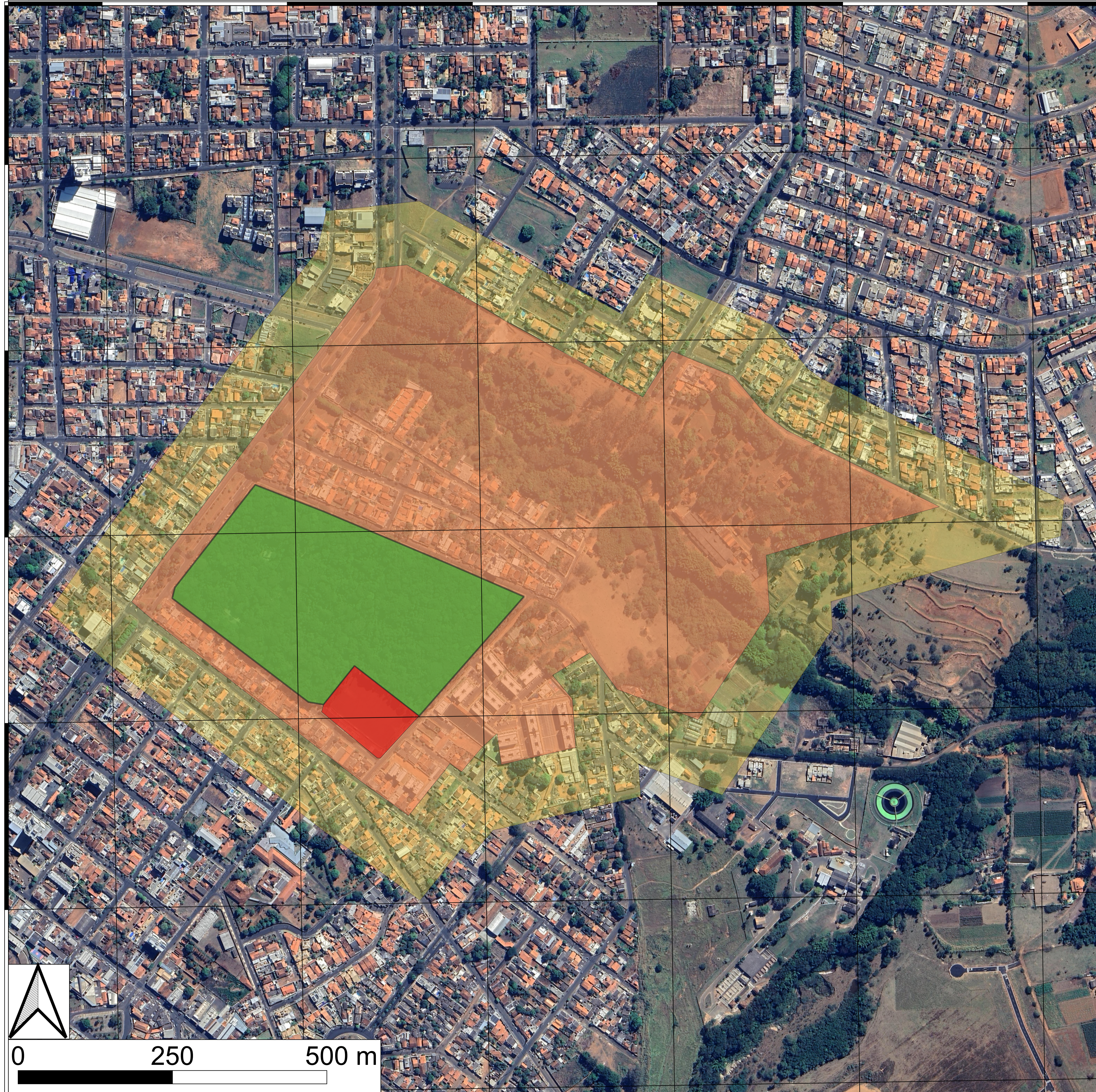
## Legenda

-  Bosque John Kennedy  
(A: 11,52 ha P: 1468,73 m)
-  Zona de Uso Restrito  
(A: 1,19 ha P: 436,94 m)
-  Zona de Amortecimento  
(A: 59,05 ha P: 3709,42 m)
-  Área Circundante  
(A: 99,38 ha P: 4364,51 m)



Sistema de Referência  
Sirgas 2000  
UTM 22S  
1:3250

Plano de Manejo do Parque Municipal  
Bosque John Kennedy  
Araguari - MG



0 250 500 m

796874 7934663 797174 797474 79774 798074 798374